

km = 0 + 000,000km = 0 + 300,000
 TS = 542,047
 H = 13000,000
 T = 275,952
 f = -2,929

km = 1 + 490,000
 TS = 495,183
 H = 9000,000
 T = 202,500
 f = 2,278

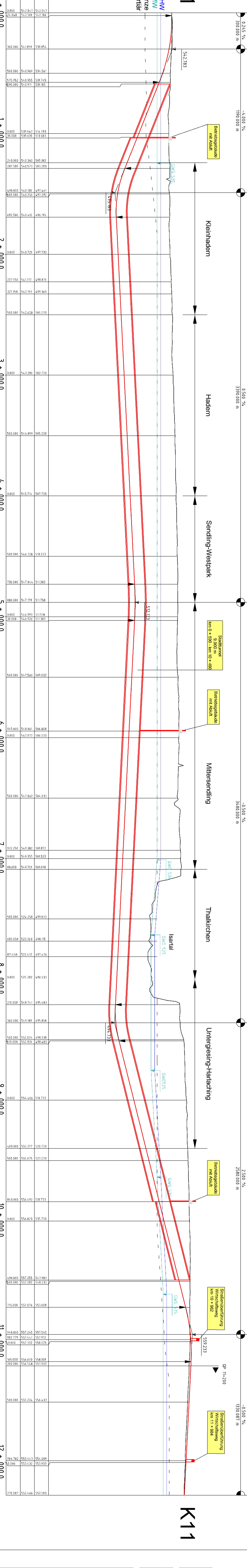
km = 4 + 880,000
 TS = 512,133
 H = 30000,000
 T = 150,000
 f = -0,375

km = 6 + 860,000
 TS = 494,733
 H = 10000,000
 T = 150,000
 f = 1,125

km = 8 + 940,000
 TS = 559,233
 H = 15000,000
 T = 225,000
 f = -1,687

km = 10 + 940,000
 TS = 552,583
 H = 15000,000
 T = 225,000
 f = -1,687

km = 12 + 270,087
 TS = 552,583
 H = 15000,000
 T = 225,000
 f = -1,687



Station	0 + 000.0	1 + 000.0	2 + 000.0	3 + 000.0	4 + 000.0	5 + 000.0	6 + 000.0	7 + 000.0	8 + 000.0	9 + 000.0	10 + 000.0	11 + 000.0	12 + 000.0																										
Gradientenhöhe	542,047 542,106	539,854	534,561	531,745 531,182	516,763 513,583	505,183 503,283	497,461 497,292	498,871	497,733	507,733	510,233	511,383	511,758	511,518 511,383	509,032	506,808 506,533	504,033	501,872 501,533	501,690	499,032	498,115 497,476	496,533	495,483	495,858 498,238 498,483	510,733	523,233	531,733	535,733	547,983 548,133	557,543 557,912	557,932	558,025	558,108 557,932	556,432	554,009 553,932	552,466			
Geländehöhe 1	542,047 542,160	541,859	540,969	540,955 540,911	539,647 539,630	540,360 540,573	540,100 540,250	540,412	540,721	549,647	546,728	547,944	547,179	546,993 546,926	547,560	548,061	547,977	547,062	549,382 549,355	549,701	524,758	522,412	525,382	524,189	522,024 522,150	525,377	510,733	532,333	539,733	547,983 548,133	557,282	557,282	557,932	558,025	558,108 557,932	556,650 556,548	554,274	553,443 553,332	552,466
Station	0,000 24,046	300,000	500,000	575,952 590,000	800,000	240,000 287,500	490,000 600,000	692,500	900,000	227,550	500,000	500,000	945,000	0,000	332,250	0,000	98,650	500,000	683,650	811,450	0,000	210,000	360,000	500,000	582,775	715,000	940,000	982,775	0,000	165,000	200,000	500,000	984,782	984,000	0,000	270,087			

Krümmungsband
 M=1:10000 - 10 / R

R = ∞
 A = 1000,000
 581,610
 16,943

R = 3000
 A = 1000,000
 1944,627
 2277,960

R = ∞
 A = 1500,000
 7,127,960

R = 4500
 A = 1500,000
 5142,960

R = ∞
 A = 1000,000
 7185,477
 7519,010

R = 3000
 A = 1000,000
 89,800
 894,133

R = ∞
 A = 1000,000
 10125,906
 936,9410

R = 1500
 A = 1500,000
 11555,444
 11795,676

R = ∞
 A = 1000,000
 12270,087

Nr.	Art der Änderung	Datum	Name
04			
03			
02			
01			

Planungsgesellschaft A 99 Südabschnitt
 OBERMEYER | PROJEKT | WABER + PARTNER | INGENIEURBÜRO
 Planungsgesellschaft A 99 Südabschnitt | OBERMEYER | WABER + PARTNER | INGENIEURBÜRO

Machbarkeitsstudie im Auftrag des Freistaats Bayern, Autobahndirektion Südbayern
 Machbarkeitsstudie vom 30.07.2010

BAB A 99 München Südabschnitt
Variante A1 Höhenplan

Masstab	1 : 10000/1000
Umlage	1,1
Bild Nr.	3

Planverleiher: **OBERMEYER** | Für die Planungsgesellschaft
 PANENHUBER + PARTNER | INGENIEURBÜRO
 DANIEL WACCOBAR/PROJEKTLEITER/CAO/TSB/TA/Assentl., Planverleiher, *1961-0000, AT/dwg
 Lufthafen, Gerdheim, © Bayerische Vermessungsverwaltung